



SKY UMBRELLA

GENERAL TRANSPORT BY HEAVY TRUCKS



Excellence in Motion



Cranes, Trailers, Forklifts,
Boom Trucks, Pickup, Boom Loaders, Wheel Loaders, Backhoe Loader
Skid steer loader, Concrete Breakers, Passenger Buses & Constructions Tools For Rent

Offshore & Onshore Oil & Gas Field Services

Tel. : 02-5500514, Fax:02-5500517, Mob. : 050-6914084, 050-7244636 P.O. Box: 92756
Email: info@skyumbrellagt.com, marketingugt5@gmail.com, Website: www.skyumbrellagt.com

MOBILE CRANES

A **mobile crane** is "a cable-controlled crane mounted on crawlers or rubber-tired carriers" or "a hydraulic-powered crane with a telescoping boom mounted on truck-type carriers or as self-propelled models." They are designed to easily transport to a site and use with different types of load and cargo with little or no setup or assembly. Following types of cranes are available with us.

1. **Truck Mounted Cranes**
2. **Rough Terrain**
3. **All Terrain Cranes**
4. **Boom Truck (Pickup with Crane)**



TRUCKS & TRAILERS

A **trailer** is generally an unpowered vehicle pulled by a powered vehicle. Commonly, the term **trailer** refers to such vehicles used for transport of goods and materials. We have following types and kinds of trailers available with us.

1. **12 -16 Meter Flatbed Trailer**
2. **12 - 16 Meter Lowbed Trailers**
3. **A Type Trailers**
4. **Tipper Trucks**



FORKLIFTS

A **forklift truck** (also called a **lift truck**, a **fork truck**, or a **forklift**) is a powered industrial truck used to lift and transport materials. The Modern forklift was developed in the 1960s by various companies including the transmission manufacturing company Clark and the hoist company Yale & Towne Manufacturing. The forklift has since become an indispensable piece of equipment in manufacturing and warehousing operations. Types of forklifts available

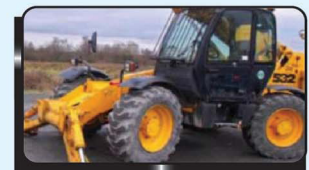
1. **Container Master Forklift**
2. **Industrial Forklift**
3. **Rough Terrain Forklift**
4. **Heavy Duty Forklift**



TELE HANDLERS

A **telescopic handler**, or **telehandler**, is a machine widely used in agriculture and industry. It is similar in appearance and function to a forklift but is more a crane than forklift, with the increased versatility of a single telescopic boom that can extend forwards and upwards from the vehicle. On the end of the boom the operator can fit one of several attachments, such as a bucket, pallet forks, muck grab, or winch.

1. **532 - 120 with 12 meter Boom**
2. **535 - 140 with 14 meter Boom**
3. **537 - 135 with 13.5 meter Boom**
4. **540 - 170 with 17 meter Boom**



PICK UPS

A **pickup truck** or **pick-up**, often simply referred to as a **pickup**, is a light motor vehicle with an open-top, rear cargo area (bed).

In U . A . E., the term pickup is used for light trucks with a lighter duty chassis and factory built, integrated bed, as well as for couple utility vehicles, often based on a personal car chassis, but also often on a special dedicated chassis for such use. Types of pickups available.

1. **3 Ton Pickup**
2. **7 Ton Pickup**
3. **10 Ton Pickup**
4. **Boom Truck (Pickup with Crane)**



LOADERS

A **loader** (**Bucket loader, front loader, front-end loader, payloader, scoop, shovel, skip loader, or wheel loader**) is a heavy equipment machine used in construction and sidewalk maintenance to move aside or load materials such as asphalt, demolition debris, dirt, snow, feed, gravel, logs, raw minerals, recycled material, rock, sand, woodchips, etc. into or onto another type of machinery (such as a dump truck, conveyor belt, feed-hopper, or railcar). Types of Wheel Loader

1. **Shoval**
2. **Back Hoe Loader**
3. **Skid Steer Loader**
4. **Excavator**



PASSENGER BUSES

A bus is a road vehicle designed to carry passengers. The most common type of bus is the single-decker rigid bus, coaches are used for longer distance services. Bus manufacturing is increasingly globalized, with the same design appearing around the world. Types of buses available

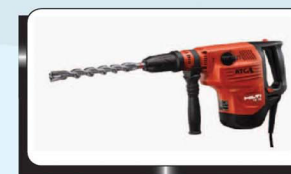
1. **9/14 Seats Bus**
2. **33/35 Seats Bus**
3. **50/55 Seats Bus**
4. **65/85 Seats Bus**



TOOLS

A **tool** is any physical item that can be used to achieve a goal, especially if the item is not consumed in the process. Informally the words is also used to describe a procedure or process with a specific purpose. Types of tools available with us

1. **Electric Breaker**
2. **Electric Cutter (Asphalt & Wood)**
3. **Compactors**
4. **Road Roller**



ABOUT SKY UMBRELLA

Sky Umbrella General Transport By Heavy Trucks is an old company with new name with all experienced staff and drivers. We recently changed from Umbrella General Transport to Sky Umbrella General Transport By Heavy Trucks, its been 10 Years we are providing our services here in Abu Dhabi. We have grown since its inception to one of the most competing transport services company in the United Arab Emirates. Our Clients include a wide range of renowned companies. Crane Trailers & Forklift Rental Services Covers a major part of the Company, with mobile cranes ranging from 16Ton to 300Ton. Other services provided by the Company are transportation with trailers; the fleet consists of Flatbed trailers, Lowbed trailers of different lengths and capacities. Forklifts, Range from 3Ton to 15Ton capacity. Company also has a large fleet of Tele Handlers, Loaders (Wheel Loaders, Backhoe Loaders, and Skid Steer Loaders) and Excavators. Please browse Through our latest list of equipment, you may find the equipment of your choice and need.

OUR PROJECT (Short listed)

- IBIS & Novatel Hotel Project, Bein Al Jasrain, AD
- Al Saraya Project, AD
- Reem Infrastructure Work, AD
- Central Market Redevelopment, AD
- Al Fallah Villas Infrastructure, AD
- Innovation Center For Borouge, AD
- New England Center For Children
- Ruwais Palace Project, AD
- Presidential Palace, AD
- Mafraq Dialysis Center, AD
- Cleveland Clinic, AD
- JW Marriot Hotel, AD
- Nation Towers, AD
- Landmark Tower, AD
- Liwa Water Project, AD
- Gulf Garden, AD
- Shamkha Power Project, AD
- Hilal Bank, Sowwah, AD
- Silla Community Hospital, AD
- ADNIC, AD
- Siemens Masdar City, AD
- Awqaf Tower, AD
- Yasat Power Project, AD
- Emirates Palace, AD
- Salam Street, AD

OUR CLIENTS (Short listed)

- Associated Construction Investment (ASCON)
- Emirates Technical Associates (ETA)
- Orascom & Contrack
- Voltas Limited
- Catic The Chinese Company
- Zetas Piling Technologies
- Action International
- Inchcape Shipping & Government Services
- Xtramix Readymix
- Unibeton Readymix
- Cape East limited
- Core Construction
- Granite Construction Company
- Inteltec Emirates
- Gisco (Al Hamooda Group)
- Bin Darwish General Contracting
- Agility Logistics
- Express Clearing & Forwarding
- Penta Global Engineering
- National Fodder Production company
- Impregilo SPA Abu Dhabi
- Al Sabah Electro-mechanical
- Cirta Electro-mechanical
- Safario Colling Factory
- Musco Lighting

CONTACT US

Tel. :02-5500514

Fax : 02-5500517

Sale: 050-6914084 - 050-7244636

Operation: 055-7693080, 055-8624436

P.O. Box : 92756

Office # 10, Musaffah 13, Abu Dhabi

United Arab Emirates

Email: info@skyumbrellagt.com, marketingugt5@gmail.com

www.skyumbrellagt.com

LOCATION MAP

